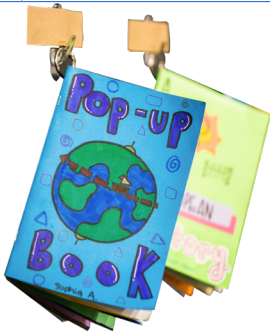




Where schools, museums, and learning meet

FACTS



The National Association of Museum Schools is the anchor that connects educators and museum professionals around the country. NAMS is dedicated to expanding the successful museum model to more classrooms and schools. Our schools partner with countless museums and organizations to bring learning to life for a diverse group of P-12 students.

Our Mission: To exhibit, enhance, and expand the successful museum school model by uniting and developing educators, museums, and community partners.

ABOUT MUSEUM SCHOOLS

There are approximately 50 museum schools across the country, representing a variety of student populations and communities. Though each school is unique, they all prioritize the building of partnerships with museums to engage students in learning opportunities that are interactive, engaging, and meaningful.

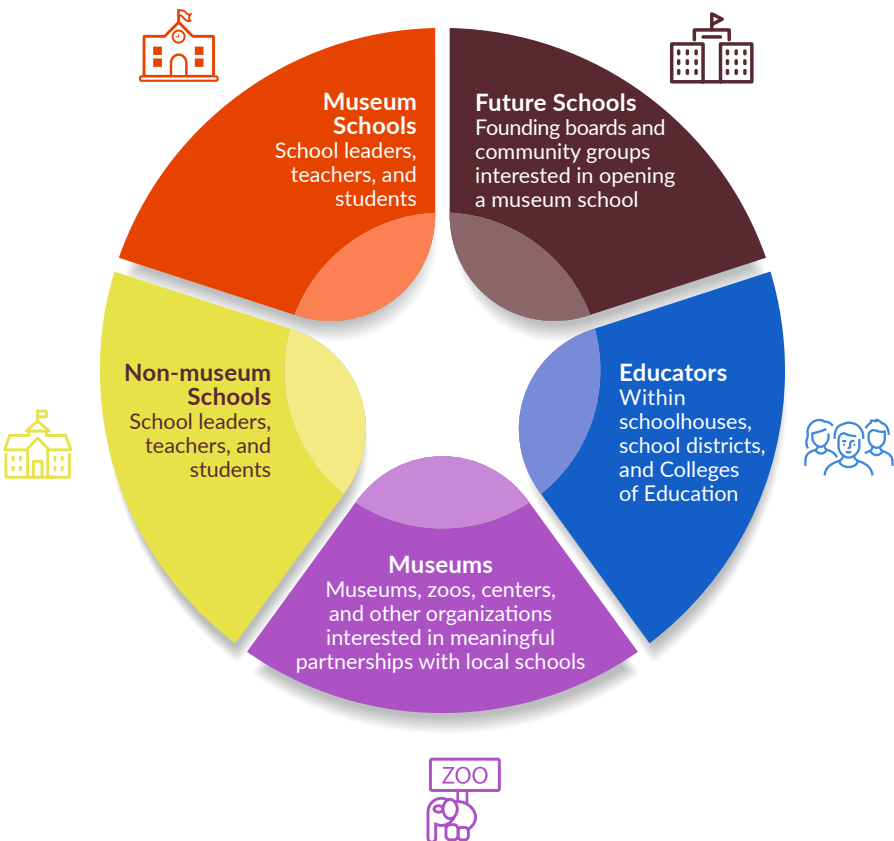


Museum schools, housed in urban and rural settings across the US, successfully serve students that represent a variety of cultural, geographic and economic experiences.

VISION:

To elevate PK-12 education by advancing current museum schools, accelerating museum programming, and advocating for additional museum schools, leading to increased student growth and engagement.

NAMS is specifically designed to support and impact:



Learn more.
Join. Donate.



50+
Museum Schools

WHY
MUSEUM
SCHOOLS
MATTER:

On average, students nationwide are not meeting grade-level expectations. National average reading and math scores for fourth, eighth, and twelfth graders show a consistent trend: the majority of students are performing lower than proficient achievement levels. Additionally, federal and state accountability measures align only to performance on state-standardized tests, leading to fewer engaging, hands-on learning opportunities.

2019 National Assessment of
Educational Progress Data

Percent of students that performed at or above the NAEP Proficient Level

	Reading	Math
4th grade	35%	41%
8th grade	34%	34%
12th grade	37%	24%

Source: <https://nces.ed.gov/>

Based on state standardized assessments, museum school students are typically outperforming their peers at traditional, non-museum schools, locally and statewide. The National Association of Museum Schools is uniquely qualified to solve the problem of low proficiency rates and a lack of meaningful learning opportunities by uniting and developing schools and museums.

Types of museum schools: charter, magnet, traditional public, theme, private	Grade Configurations <ul style="list-style-type: none">• Preschool• K-5• K-8• K-12• 9-12
Museum schools are found in 15 states, coast to coast, in urban and suburban areas.	

Free/Reduced Lunch range	4% – 98.8%
Students of Color range	20% – 80%
Students with Disabilities range	4% – 32%
Students with Disabilities average	13%
English Learners range	1% – 55%

WHO WE ARE

Our Values

The research-based **CORE ELEMENTS** of museum learning lead to improved student outcomes for a diverse body of students. The National Association of Museum Schools is primed to disseminate and support the expansion of these core elements. // Museum schools and museums have the power to make change within the PK-12 setting. We **EMBRACE THE POWER OF MUSEUMS AND MUSEUM SCHOOLS** by fostering collaboration among museum schools, museums, and traditional schools. // The National Association of Museum Schools prioritizes the **DEVELOPMENT OF OUR MEMBERS** by enhancing current museum schools and increasing access to more museum schools, which benefits students, teachers, and museum educators.

OUR BOARD

Andy Huff, Board Chair
Brand Creative Manager, Georgia Power
Atlanta, Georgia

Kaleen Tison Povis, Ph.D., Vice-Chair
Personalized Learning Facilitator, Lighthouse School
Minneapolis, Minnesota

Chris Delgado, Secretary
Senior Legal Counsel, Apple
San Jose, California

Terence Washington, Treasurer
Owner and Operator, CharterFiGuy, LLC
Atlanta, Georgia

Joel Lowy, Board Member
Assistant Principal and Museum Liaison, NYC Museum School
New York, New York

Katherine Kelbaugh, Ph.D., Ex-Officio
Executive Director, The National Association of Museum Schools
and The Museum School of Avondale Estates
Decatur, Georgia